



Texas Consortium *for the* Non-Medical Drivers of Health

Advancing Research, Policy and Practice

Jacquie Klotz, MA

Program Manager, Texas Consortium for the Non-Medical Drivers of Health

Rice University's Baker Institute for Public Policy

Our Purpose

Improve health outcomes and reduce health disparities through integration of the non-medical services into the health care delivery system



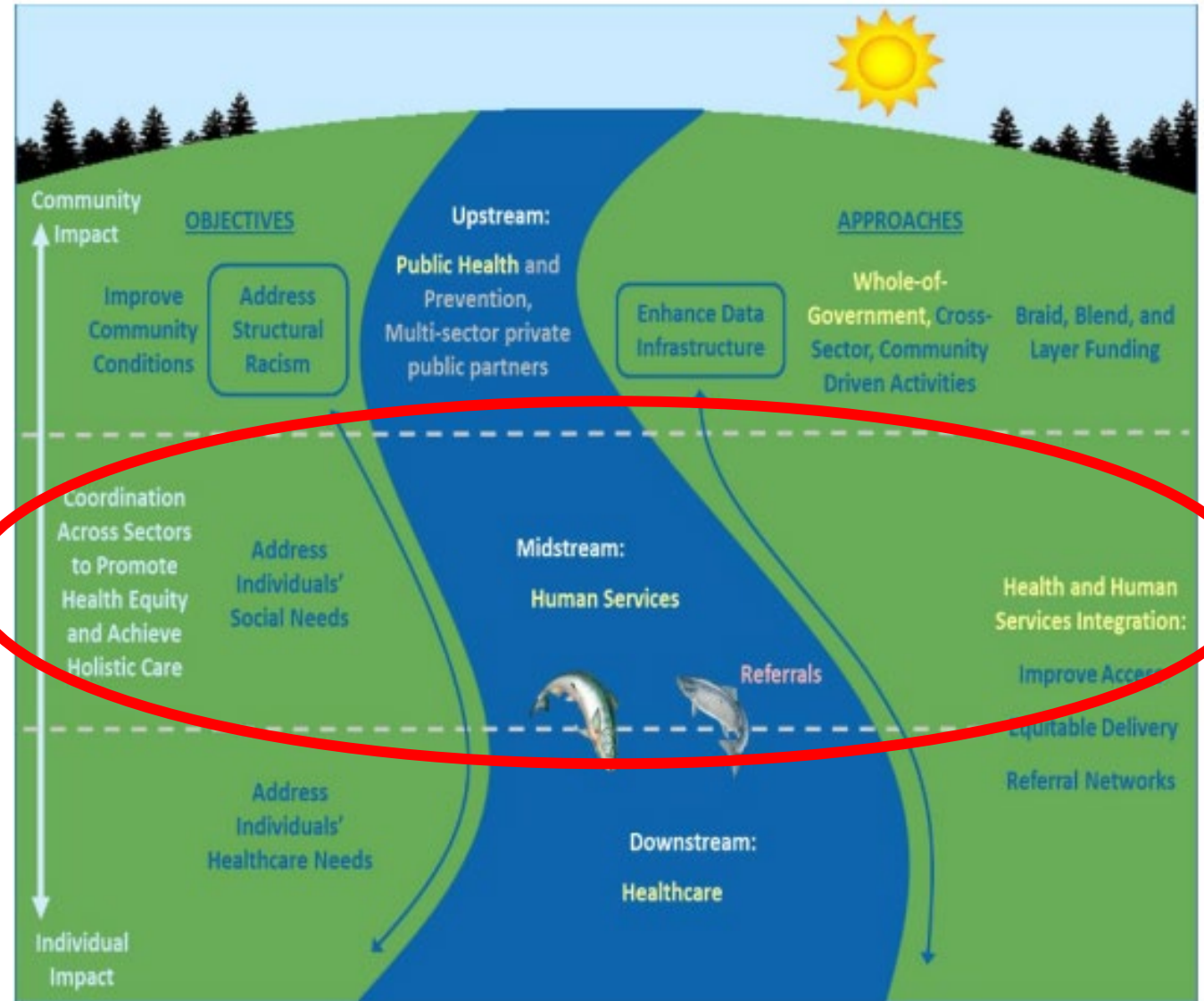
Texas NMDOH Consortium

NMDOH Quality Measures

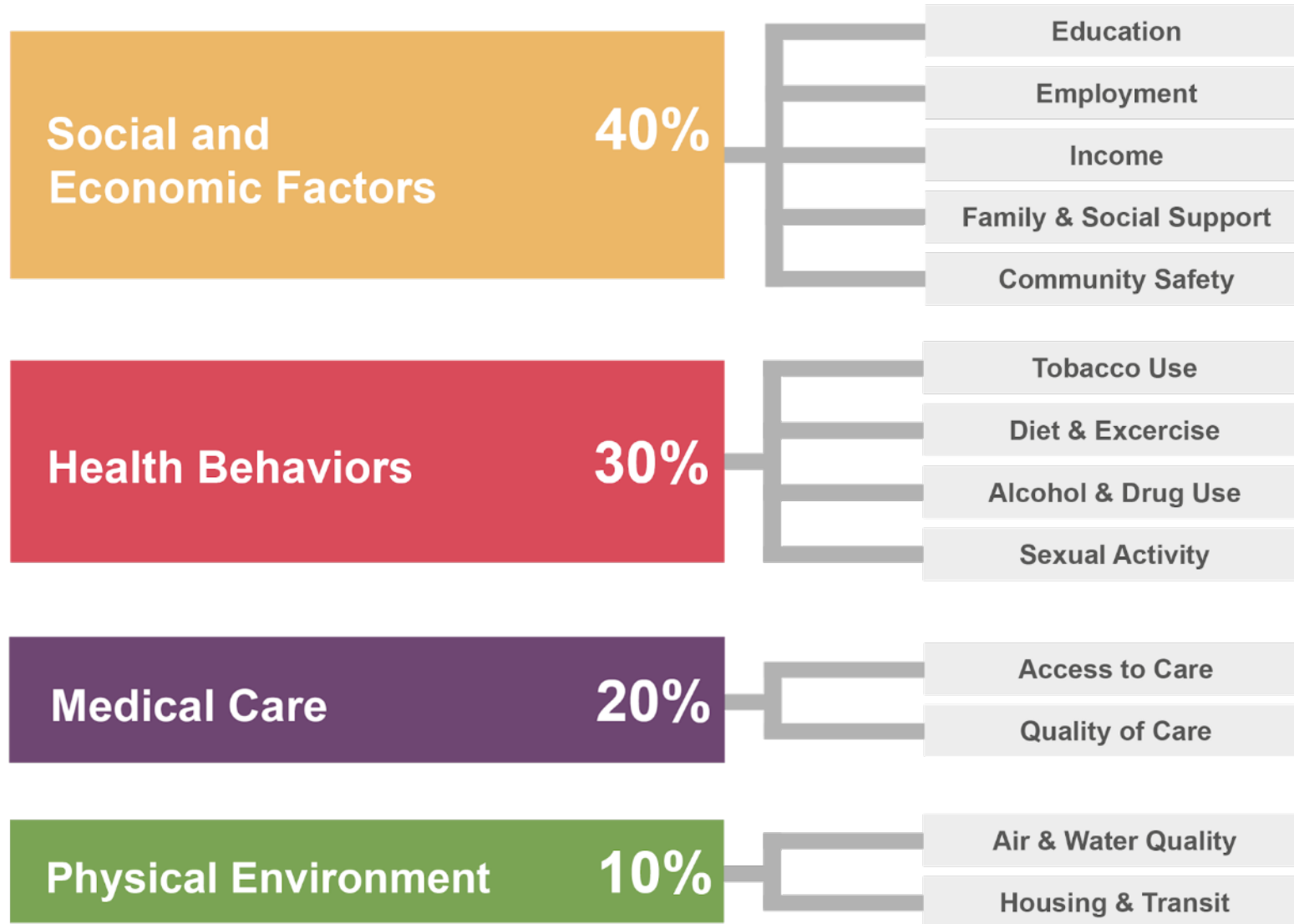
Program			Measure		
	Screening for NMDOH	Screen Positive Rate for NMDOH	Social Needs Screening and Intervention (SNS-E) Measure	Connection to Community Service Provider	Hospital/Facility Commitment to Health Equity
Hospital Inpatient Quality Reporting Program	Required	Required			Required
Merit Based Incentive Payment System (MIPS)	Included			Included	
Healthcare Effectiveness and Intervention Data Set (HEDIS)			Required		
Medicare Shared Savings Program/APM Performance Pathway	Possible in 2025	Possible in 2025			
Inpatient Psychiatric Facility Quality Reporting Program	CMS adopting: - CY24 voluntary - FY27 required	CMS adopting: - CY24 voluntary - FY27 required			CMS adopting FY 2026
PPS-Exempt Cancer Hospital Quality Reporting Program	Required in FY26	Required in FY26			Required in FY26

Source: NASDOH, NASDOH.ORG

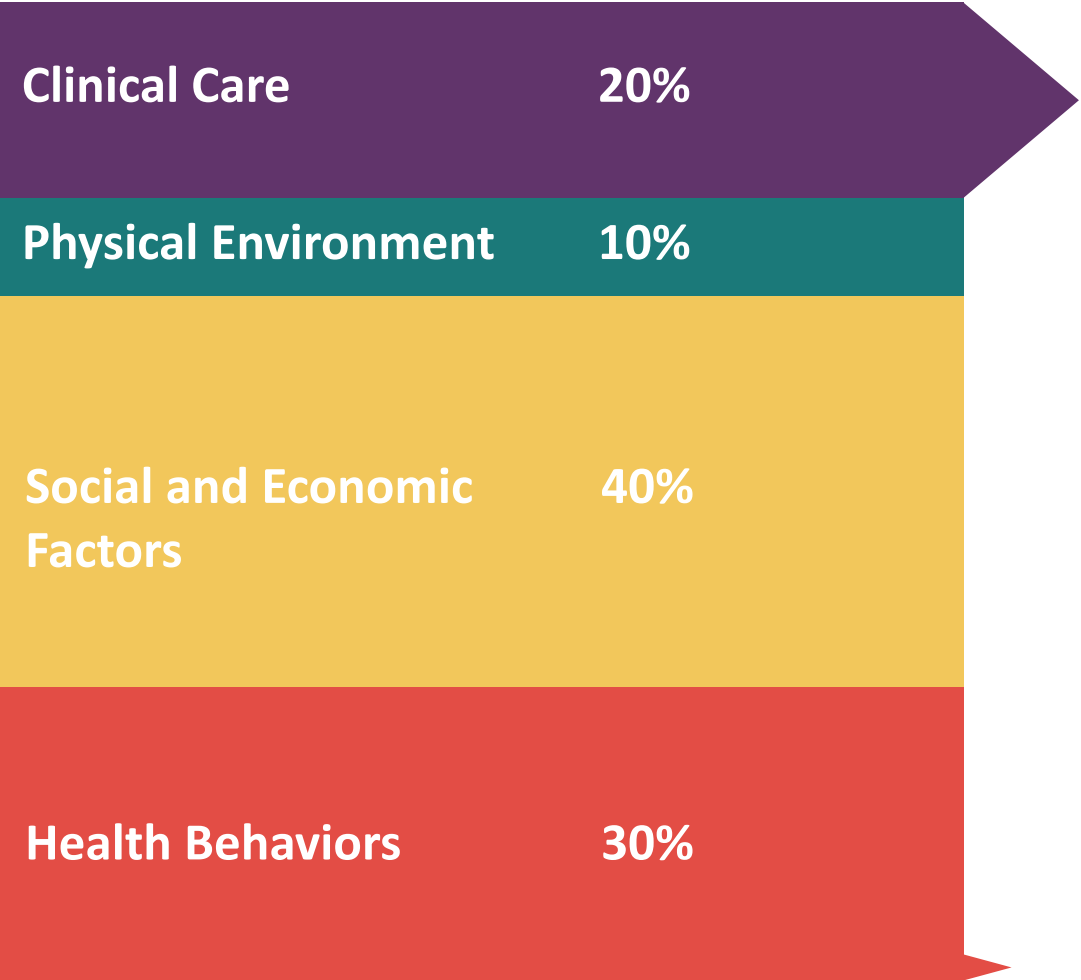
At the Texas NMDOH Consortium we are focused on shifting practices within the health care system through midstream impact



DRIVERS OF HEALTH



DRIVERS

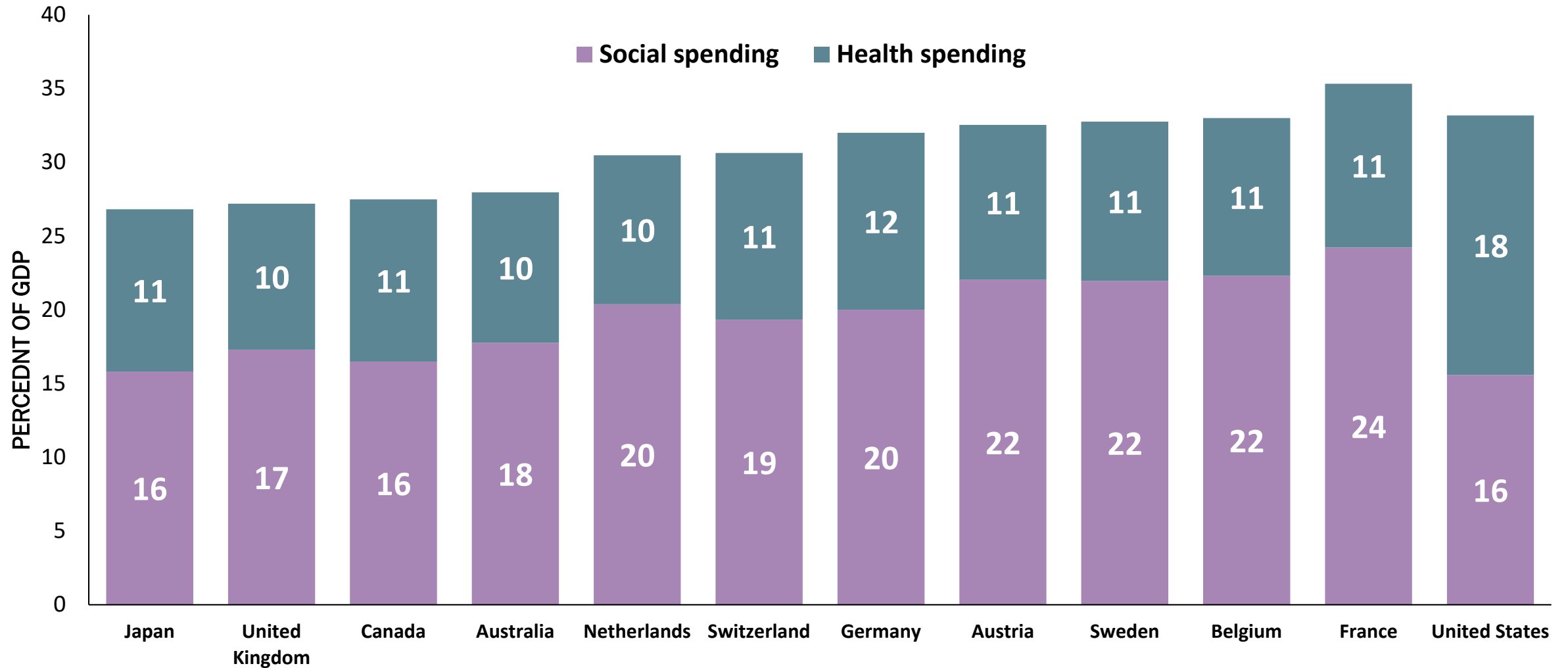


EXPENDITURES

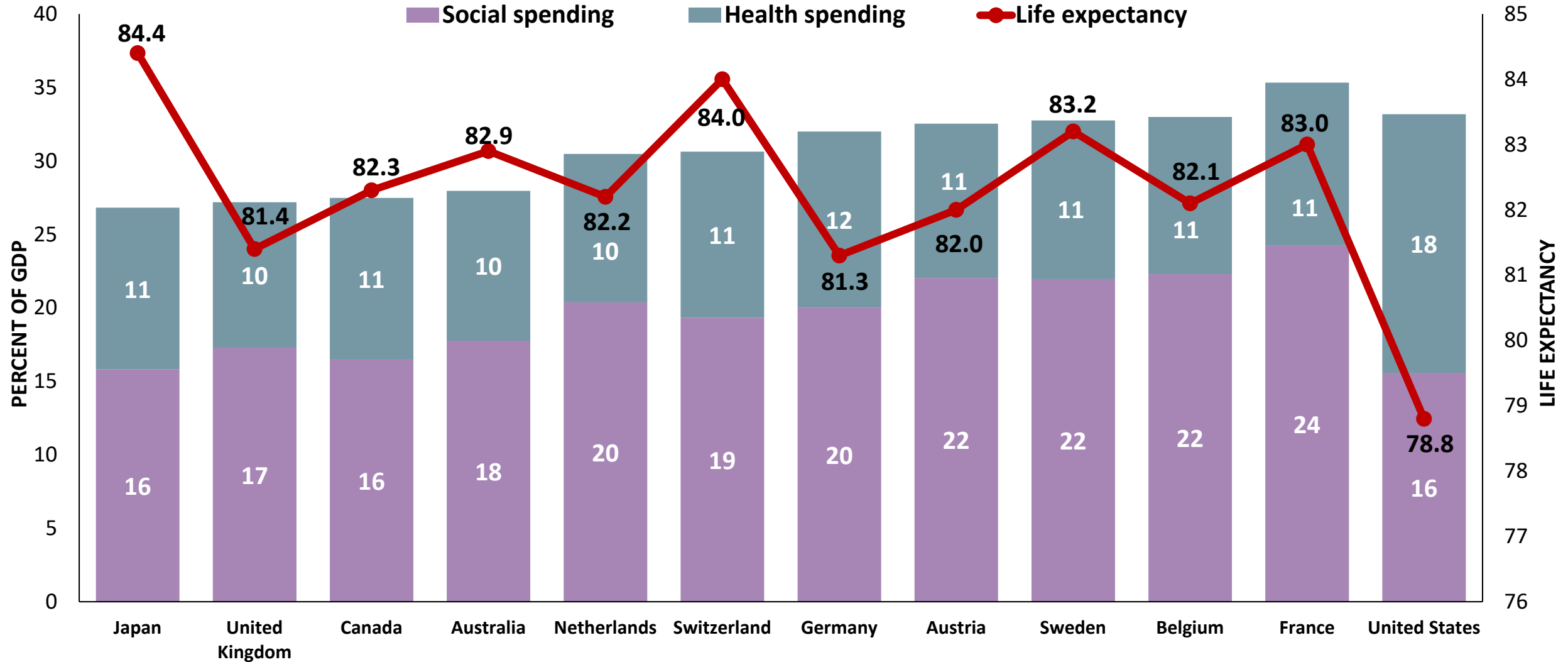


2022

U.S. HEALTH VS. SOCIAL SPENDING

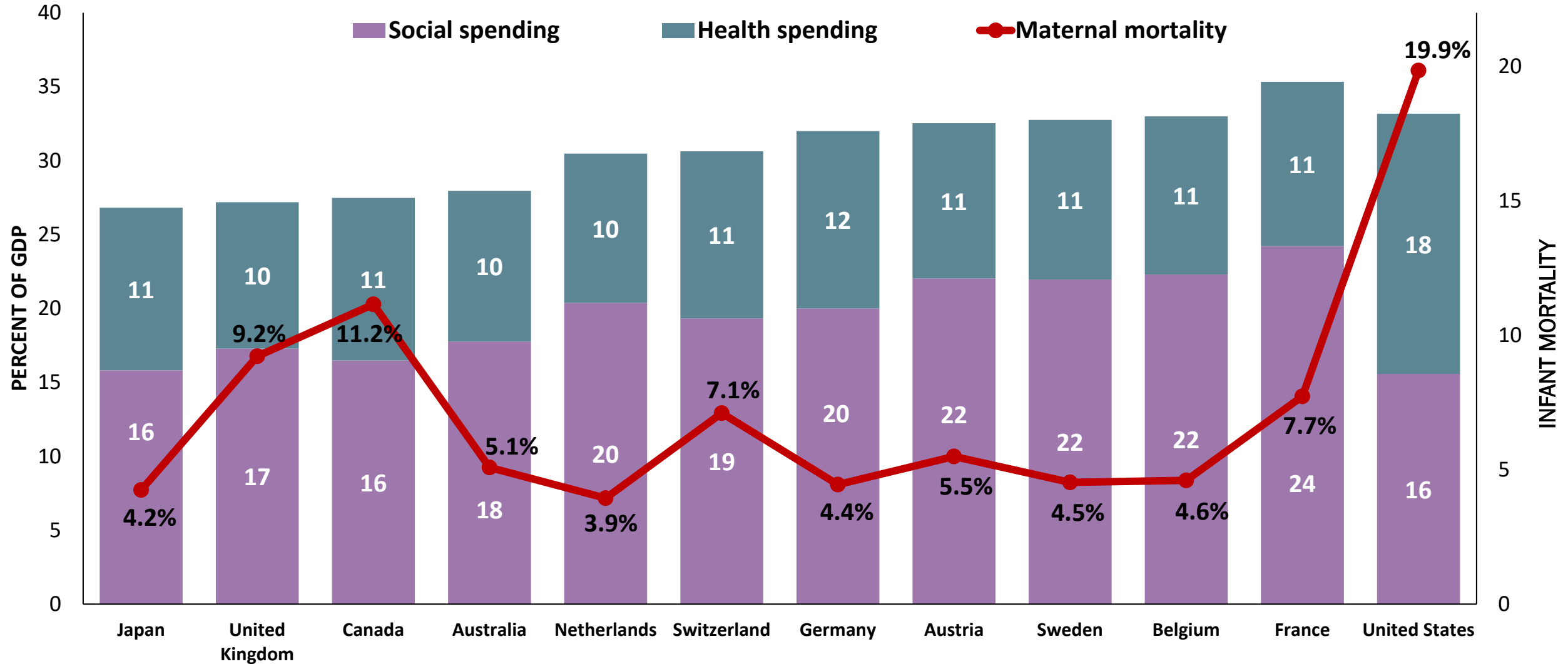


U.S. LIFE EXPECTANCY TRAILS BEHIND OECD NATIONS



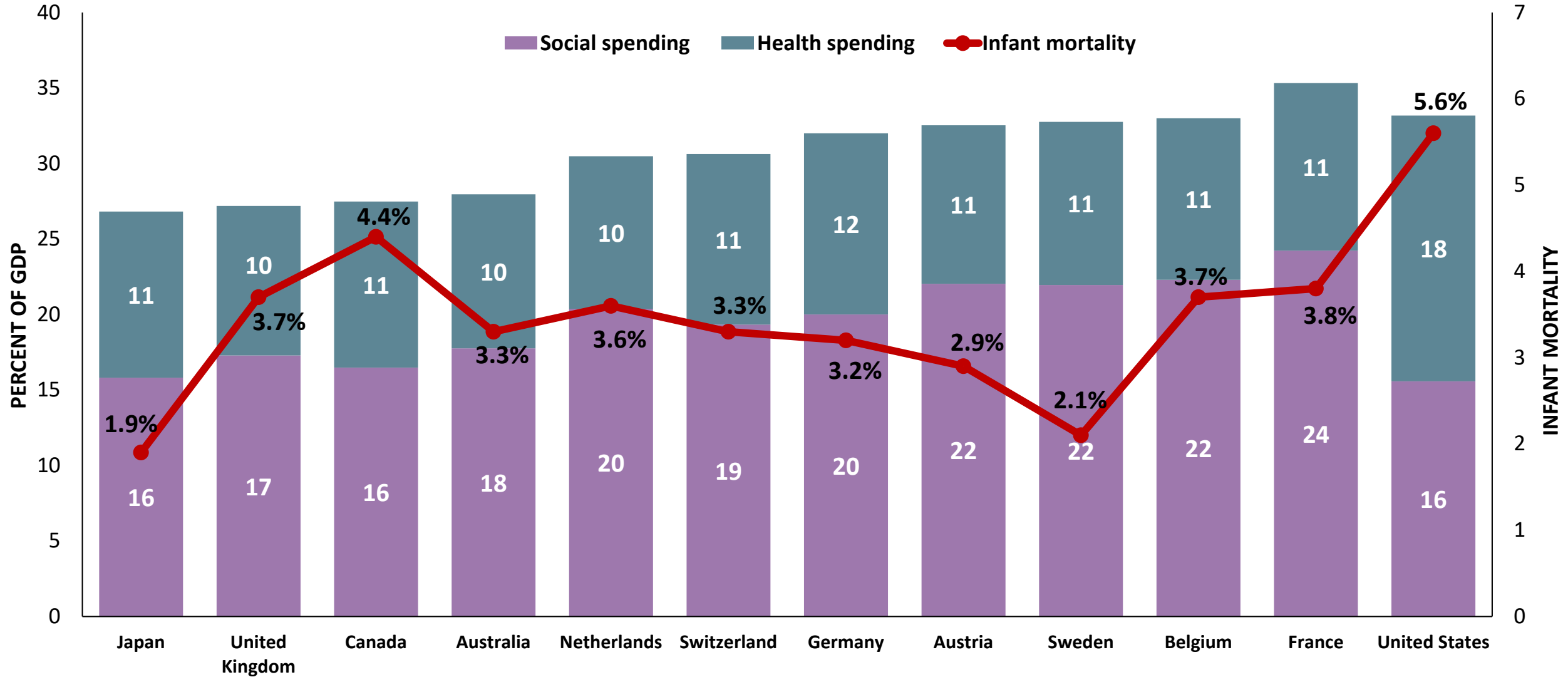
Data source: OECD (2023), [Life expectancy at birth](#) (indicator). (Accessed on 26 May 2023); [Peterson-KFF Health System Tracker](#) (n.d.) Country comparison, social spending. (Accessed on 30 June 2023).

U.S. **MATERNAL MORTALITY** HIGHEST AMONG OCED NATIONS

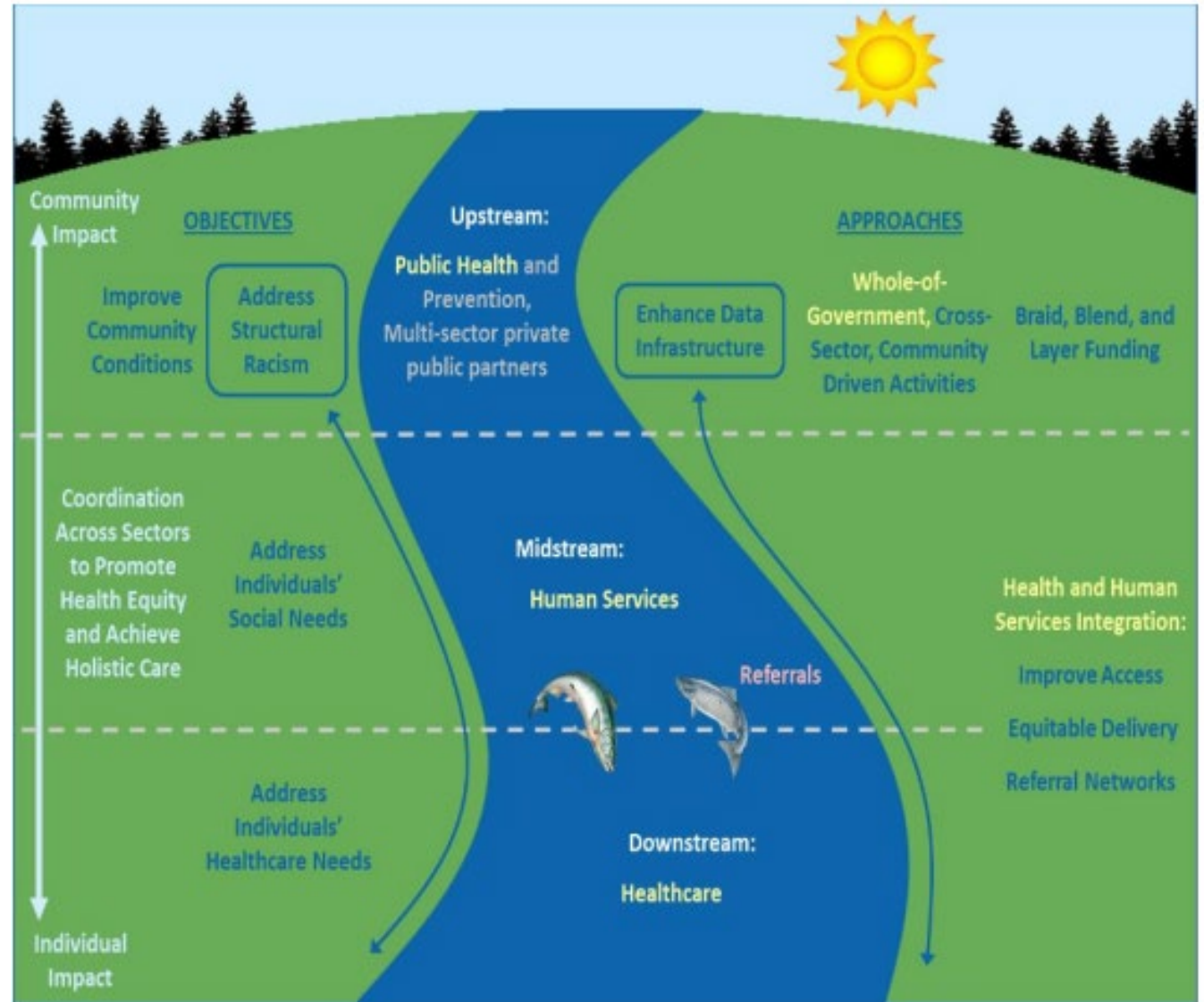


Data source: [Peterson-KFF Health System Tracker](#) (n.d.) Country comparison, social spending. (Accessed on 30 June 2023); Unicef (2023), Maternal mortality ratio (per 100,000 live births). (Accessed on 26 May 2023).

U.S. **INFANT MORATLITY** HIGHEST AMONG OECD NATIONS



- **Virtual convenings** promoting lessons learned and best practices
- **In-person Conference**
- **NMDOH Program Index** showcasing the work



NMDOH Program Index

The first offering of our resource hub, a searchable index of NMDOH programs in Texas that are sponsored by health organizations in Texas.

Programs In Texas

Non-Medical Drivers of Health Program Index

You can search for Texas NMDOH programs by selecting your areas of interest in the 8 fields listed below.

You may select one, all, or none of the areas listed under each field. You may also use the search bar below to filter results.

An alphabetical listing of all programs grouped by program sponsor appears below.

Index contains 30 programs

Program Sponsor	+
Drivers of Health	+
Target Populations	+
Health Condition(s)	+
Counties	+
Program Status (Active/Inactive)	+
Program Evaluated (Yes/No)	+

Community Health Choice

CareerReady Program

Food Rx

Driscoll Health Plan

Nutrition for Maternal Health

Factor Health at Dell Medical School

FUEL (Food, fUn, frEsh, famILy)

Kidney Health, Eat Well, Live Well

View Program Index: <https://index.driversofhealthtx.org/>

Submit your programs

NMDOH Programs include services or resources delivered by a health care organization to their patient population to target non-medical needs

- Email jk90@rice.edu to submit!